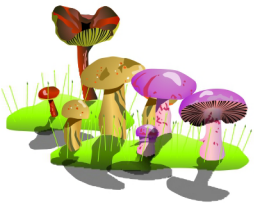


Mixer c/w 2.5hp engine



Drum capacity	: 140L
Drum diameter	: 24"
Wheel	: 10" x 2.5"
Engine type	: Forced air-cooled 4-stroke valve-sided
Displacement	: 97.7ml
Compression Ratio	: 5.6:1
Theoretic max output	: 1.8kW/4200rpm
Start model	: Recoil and hand-operated
Fuel Tank capacity	: 1.4L
Oil capacity	: 0.35L
Drum speed	: 28rpm

Stock Code
881301007



***Product's specification may subject to change without further notice.
***Actual product may slightly differ from pictures shown.