

HAWK™

FLOOR DRYER with handle



The HAWK floor dryer with handle AD002 switch is a three-shift switch. The switch position symbols are “O”, “L” “M” and “H”.

Rotate the dot on the switch in the red shift. The indication “O” indicates stop. The indication “L” indicates Shift 1. The indication “M” indicates Shift 2. The indication “H” indicates Shift 3.

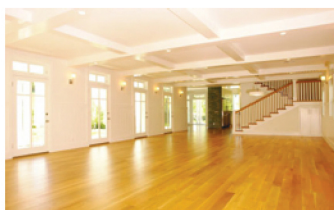
specification

Power	900 W
Voltage / Frequency	220 - 240V / 50Hz
Delivery	110, 130 , 160 m ³ / min
Impeller Size	270 mm
Gross Weight	18.8 kg
Net Weight	17.8 kg
Carton Size	550 x 400 x 600 mm

MODEL AD002

Stock Code : 881107003

HAWK Floor Dryer with Handle is characterized by easy operation, safety in use, and optimum drying or ventilation effects. It especially applies to **Hotels, Wineshops, Office Buildings, Exhibition** venues and large public places. It is used for drying of cleaned **Carpets and Floors** and ventilation and heat dissipation. The design of the extendible pull rod facilities move.



*** Product's specification may subject to change without further notice.
*** Actual product may slightly differ from pictures shown.

ESM101
(20/03/15)